

CAL POLY MUSTANGS

San Luis Obispo, California
Enrollment: 18,842

Tim Walsh (Career 121-89)
2nd Year at Cal Poly
Walsh's record at Cal Poly (4-7)

POSITION OUTLOOK FOR 2010

QUARTERBACKS - Prior to LY the Mustangs were led by 2 yr starter Jonathan Dally who threw for 2,238 (54%) in '07 & 1,960 (57%) in '08 with an outstanding combined ratio of 52-10. Tony Smith had 7 pass at in 2008. Smith threw for 1,618 (51.1%) with a 15-8 ratio and rushed for 230 (2.0) last year. He had a late season surge and in a 4 game stretch avg'd 56% with 10TD's. While he doesn't have the position locked up, his late season success and experience makes him the clear #1 out of spring. He will be pushed by Andre Broadous (6'0" 190 So), Doug Shumway (6'0" 183 So) and 2 rFr recruited by 2nd year HC Tim Walsh.

RUNNING BACKS - This spread triple-option offense relies heavily on the FB. Last season the Mustangs needed to replace their top 3 rushers (lost 2072 yds, 61% of rush off) incl QB Dally who led with 821 (5.4). LY the rushing fell from 307 ypg to just 178 ypg. The FB's led the way as 1st Tm GWC Jake Romanelli (492, 4.6) and Jordan Yocum (459, 4.0) were #1 and #2. QB Smith was #4. The SB position is wide open this year as they lose Jono Grayson (333, 5.9), Jon Hall (143, 4.9) and Jaymes Thierry (142, 4.3). David Mahr (48, 3.0 & 19 rec) and converted WR Jarred Houston (6 rec) are battling for the W-Back position while a pair of HC Tim Walsh recruits, rFr Fred Gaines & Gabriel Umoh fight for the other S-Back position.

RECEIVERS - Ramses Barden (6'6") showed everyone how productive a WR could be in a run-first offense. He finished with TD rec's in all 11 games of the '08 season tying the NCAA record (Randy Moss) and had 63% of the rec yds. He was a #3DC of the NYG in 2009. LY PS#41 UCLA transfer Dominique Johnson (741, 17.2) filled his shoes. Johnson returns and while he had shoulder surgery in January, he should be fine for the season. There is certainly experience as starter Eric Gardley (203, 18.5) also is back. Kellen Moriarty spent 3 seasons as a backup DB had a solid spring and will push Gardley for starting time. The RB's are a big part of the passing game and finished LY as the #3, #4 & #5 rec's. If Johnson is healthy, we'll see an improvement from LY's 153 rec ypg.

OFFENSIVE LINE - The 2008 team which beat San Diego St, was a missed xp away from beating Wisconsin and the offense was special indeed as they avg 307 ypg rush (6.4). LY's OL had 4 starters back but was without a mobile QB and the numbers sunk to 179 ypg rush and only 3.9 ypc. LT Art Munoz (11 st '08) missed 9 gms with a fractured leg but returns this year and is joined by the 5 starters that finished LY led by HM All-GWC C Hal Kelley and 2nd Tm GWC OT Scott Winnewisser. RG Will Mitchell also earned 2nd Tm GWC honors.

DEFENSIVE LINE - In 2009 the defense made the transition from a 3-4 flex under previous HC Ellerson to a standard 4-3. The stats showed a normal regression with the scheme change as Cal Poly went from allowing 103 ypg (3.3) with just 1 DL starter back to 134 ypg (4.1) with 2 ret starters. This year they lose 1 starter but it is 1st Tm GWC Ryan Shotwell (41 tkl, 5 sk, 4.5 tfl, 9 pbu). The 3 back are 2nd Tm GWC DT James Chen (27 tkl, 2.5 tfl) and DE's Brandon Roberts (25 tkl, 1 tfl) and Karl Winkelman (10 tkl, 1.5 tfl). Erich Klemme (38 tkl, 2 sk, 3.5 tfl) played starters-type time at DT.

LINEBACKERS - The LB's had 2 starters back LY and also had one less spot to fill with the switch to the 4-3. The team went from allowing a recent high of 26.5 ppg in 2008 to a more disappointing 27.5 ppg LY. It must be noted that the front 7 suffered attrition and in games 2 & 3 they faced a pair of FBS teams in bowl bound Ohio and San Jose St holding them to an avg of 24 pts and 17 FD's. This year the unit loses 2x 2nd Tm GWC LB Carlton Gillespie (#3 tkl'r) but they're in fine shape with the top 2 tkl'r's back. Marty Mohamed (93 tkl, 3 sk, 5.5 tfl) earned 2nd Tm GWC while Kenny Jackson (58 tkl, 4.5 tfl) earned HM GWC. They also return '08 starter Gavin Cooper (29 tkl, 3 sk, 3.5 tfl in '08) while Quentin Greenlaw (16 tkl LY) has caught the coaches' attention and will challenge for playing time.

DEFENSIVE BACKS - The '08 unit ret'd only 1 starter and allowed 269 ypg (55%). LY all 4 starters were back but the numbers slipped to 264 ypg (59%). This unit returns 2 starters this year and is clearly led by 1st Tm GWC CB Asa Jackson (48 tkl, 2 int, 6 pbu) who is a star in the making. CB Bijon Samoodi (44 tkl, 2 pd) finished as the team's #6 tkl'r backing up as a true. Starting S Scottie Cordier (38 tkl, 4 int) returns. RFr Xavier Ramos looks to be the replacement as the other safety.

SPECIAL TEAMS - K Chris Pinto returns after hitting 8-13 FG (long 42) and he will also take over the punting duties with the departure of Harlan Prather (35.6, net 33.5). The team will need to find a new KR but should improve on a poor 16.8 tm avg while the dynamic Asa Jackson (15.5) will handle PR's.

COACHES - Tim Walsh enters his 2nd season after replacing the departed Rich Ellerson (HC Army). Walsh was most recently the OC at Army and was the HC at Portland St for 11 yrs. His co-OC's are Bryan Cook (HC West Point Prep for 4Y) and Saga Tuitele (OL cch at Army 2Y). DC Greg Lupier spent 1 year at Toledo prior to coming here and 12 years at Portland St under Walsh incl the L7 as DC.

FORECAST - The Cal Poly program enjoyed a resurgence under Rich Ellerson. Ellerson came here in 2001 and after going 9-13 in his 1st two years the Mustangs rattled off 6 straight seasons

2010 SCHEDULE

9/4	Humboldt St
9/11	Montana
9/18	at Texas St
9/25	at McNeese St
10/2	at Fresno St
10/9	at Old Dominion
10/16	at Southern Utah
10/23	North Dakota
10/30	St Francis
11/6	at South Dakota
11/13	UC Davis
11/20	



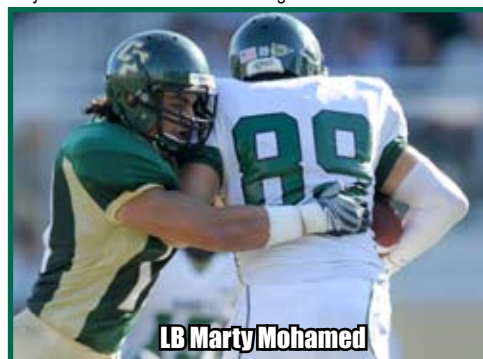
2009 RECORD:
(4-7)

RETURNING STARTERS:
OFFENSE: 11*
DEFENSE: 8

LETTERMEN:
Returning: 59 (31,28.4)
Lost: 16 (6,10.3)
2009 AVG ATTENDANCE:
9,588 (#38)

GREAT WEST

with at least 7 wins making it to the playoffs two times. As I often mention new head coaches bring new schemes and while Tim Walsh just tweaked the offense there was an overhaul on the defensive side. They moved to a 4-3 defense LY with 2 losses to FBS programs but dealt with attrition as 7 starters missed action and they dropped their final 4 allowing 97 pts the L2W. They now have 19 starters back, an experienced QB and much better depth after LY's injuries. Cal Poly should be back where they're accustomed to with a winning season in 2010.



**STADIUM: ALEX G. SPANOS STADIUM (11,075) (#73)
PLAYING SURFACE: GRASS**

	2002 2003 2004 2005 2006 2007 2008 2009 8Yr Total								
	W	L	T	W	L	T	W	L	T
Straight Up	3-8	7-4	9-2	9-4	7-4	7-4	8-3	4-7	54-36
Home	2-3	5-1	4-1	6-0	4-1	4-1	5-2	4-1	34-10
Away	1-5	2-3	5-1	3-4	3-3	3-3	3-1	0-6	20-26
Conf	-	-	4-1	4-1	2-2	2-2	3-0	1-3	12-8
Non-Conf	3-8	7-4	9-2	5-3	5-2	5-2	3-4	3-4	42-28
Playoffs	-	-	-	1-1	-	-	0-1	-	1-2

2009 STATISTICAL LEADERS

	ATT	GAIN	LOST	NET	TD	AVG	PLAYER	TKL	SKS	TFL	PBU	INT	
RUSHING													
Jake Romanelli	107	497	5	492	2	4.6	Marty Mohamed	93	3	5.5	3	0	
Jordan Yocum	115	466	7	459	1	4.0	Kenny Jackson	58	0	4.5	1	1	
Jono Grayson	56	344	11	333	1	5.9	Carlton Gillespie	52	4	5.5	0	0	
Tony Smith	113	381	151	230	5	2.0	David Fullerton	48	0	1	4	3	
Jon Hall	29	148	5	143	1	4.9	Asa Jackson	48	0	3	6	2	
Jaymes Thierry	33	157	15	142	1	4.3	Bijon Samoodi	44	0	2	1	1	
Kevin Rutledge	7	51	2	49	0	7.0	Xavier Gardner	43	0	1	2	1	
David Mahr	16	54	6	48	1	3.0	Ryan Shotwell	41	5	4.5	9	0	
Harlan Prather	5	13	0	13	0	2.6	Scottie Cordier	38	0	1	2	4	
PASSING	ATT	COMP	PCT	YDS	TD	INT							
Tony Smith	219	112	51	1618	15	8	Erich Klemme	38	2	3.5	0	0	
Harlan Prather	7	4	57.1	68	1	0	Greg Francis	32	0	0.5	1	3	
							James Chen	27	0	2.5	1	0	
RECEIVING	REC	YDS	AVG	TD	LONG								
Dominique Johnson	43	741	17.2	6	73	Brandon Roberts	25	0	1	2	0	0	
Eric Gardley	11	203	18.5	1	42	Quentin Greenlaw	16	1	1	0	0	0	
David Mahr	19	194	10.2	1	29	Kevin Hess	12	0	0.5	0	0	0	
Jon Hall	10	186	18.6	3	52	Karl Winkelman	10	0.5	1	0	0	0	
Jordan Yocum	6	87	14.5	1	32	Stash McGuinness	7	0	0	0	0	0	
Mike Anderson	5	86	17.2	3	59	Max Schulz	7	0	0	0	0	0	
Jared Houston	6	74	12.3	1	41	Moby Best	7	0	1.5	0	0	0	
Jono Grayson	8	67	8.4	0	16	Keaton Taylor	7	0	1	0	0	0	
PUNTING	NO	YDS	AVG	FC	NET	BLK	INT	PUNTS	AVG	TD			
Harlan Prather	50	1780	35.6	16	33.5	1	17	13	201	15.5	0	0	
KICKING	XP	1-29	30-39	40-49	50+	0-13	LONG	KICK	RETURNS	NO	YDS	AVG	TD
Chris Pinto	28-30	2-4	5-7	1-2	0-0	8-13	42	47	829	17.6	0	0	
								4	54	13.5	0	0	

OFFENSE - LAST 6 YEARS - DEFENSE

RET	OFF	TOTAL	OFF	OFF	OFF	PASS	OFF	SKS	TOTAL	RET	DEF	TOTAL	DEF	DEF	DEF	PASS	DEF	SKS	
PTS	YDS	YDS	RUSH	YPC	RUSH	%	YPP	VS	TURN	PTS	YDS	YDS	RUSH	YPC	PASS	%	YPP	BY	
4	23.5	332	178	3.9	153	50.9	14.1	17	+11	2009	8	27.5	398	134	4.1	264	58.6	14.4	17
10*	44.4	488	307	6.4	181	56.7	11.0	9	+10	2008	5	26.5	371	103	3.3	269	55.4	14.0	37
7*	39.3	487	272	5.2	215	53.4	12.4	15	-2	2007	5	25.3	370	152	4.4	219	48.1	14.7	21
6	22.5	300	183	4.2	117	44.8	13.3	11	+2	2006	7	14.7	248	115	3.3	133	47.9	16.9	37
7	27.2	353	207	4.8	146	53.0	13.0	15	+8	2005	5	17.8	319	115	2.8	205	52.0	17.9	67
7	30.5	583	370	5.8	213	54.3	12.7	14	+8	2004	6	16.6	297	84	2.4	246	50.4	19.8	47

OFFENSE 2009 STATS BY GAME

CP	2009	OPPONENT	FD	Rush-YDS	AVG	CO-ATT	YDS	SKS	VS	FD	Rush-YDS	AVG	CO-ATT	YDS	SKS	TURN
10,381		Sacramento St	23	60-258	4.3	12-19	218	1	16	24-42	1.8	19-34	246	1	+4	
16,018		at Ohio	14	54-239	4.4	1-11	12	0	18	31-186	6.0	15-29	244	0	-1	
13,510		at San Jose St	17	43-179	4.2	10-26	135	2	16	31-242	7.8	18-32	172	1	0	
10,331		South Dakota St	20	48-202	4.2	13-24	131	1	14	27-89	3.3	18-32	216	2	+1	
25,694		at Montana	12	47-164	3.5	10-20	153	0	18	38-175	4.6	14-27	278	0	+3	
10,017		S Utah	16	48-228	4.8	3-7	22	0	26	40-122	3.1	27-40	263	5	+2	
9,231		Dixie St	11	49-178	3.6	7-13	119	1	18	25-31	1.2	22-49	244	6	+3	
6,711		at North Dakota	11	27-62	2.3	13-27	203	3	23	52-238	4.6	15-23	189	1	-1	
10,849		at UC Davis	16	42-179	4.3	12-18	120	2	20	29-99	3.4	21-36	278	0	+1	
7,979		South Dakota	23	35-126	3.6	24-39	407	2	27	31-140	4.5	26-37	413	0	+1	
5,382		at Weber St	21	52-148	2.8	11-24	166	5	24	29-107	3.7	23-33	364	1	-2	
TOTALS			184	505-1963	3.9	116-228	1686	17	220	357-1471	4.1	218-372	2907	11	+11	
AVERAGES			16.7	46-178	3.9	11-21	153	1.5	20	32-134	4.1	20-34	264	1.5	+1	

2004 RESULTS		2005 RESULTS		2006 RESULTS		2007 RESULTS		2008 RESULTS		2009 RESULTS	
OPPONENT	SCORE	OPPONENT	SCORE	OPPONENT	SCORE	OPPONENT	SCORE	OPPONENT	SCORE	OPPONENT	SCORE
Humboldt St	42-7	at Troy	10-27	Fort Lewis	44-0	at Texas St	35-38	at San Diego St	29-27	Sacramento St	38-19
at Idaho St	35-20	Sacramento St	37-13	at Weber St	17-0	at Idaho	13-20	Montana	28-30	at Ohio	10-28
at Montana St	27-14	Montana St	38-10	at Sacramento St	17-10	Weber St	47-19	at Northwestern St	52-18	at San Jose St	9-19
South Dakota St	14-7	at South Dakota St	24-16	at San Jose St	7-17	Western Oregon	24-17	South Dakota	49-22	at South Dakota St	21-14
at Southern Utah	24-17	at Northern Colorado	31-14	Southern Utah	18-14	Northern Colorado	56-21	at South Dakota St	42-28	at Montana	23-35
Texas St	38-21	at Montana	27-36	UC Davis	23-17	at UC Davis	63-28	Southern Utah	69-41	Southern Utah	24-23
at North Dakota St	13-10	at UC Davis	13-20	at South Dakota St	28-29	at South Dakota St	35-48	Idaho St	49-10	Dixie State	44-14
UC Davis	33-36	Eastern Washington	40-35	at San Diego St	16-14	at Idaho St	48-28	NC Central	49-3	at North Dakota	17-31
at Eastern											